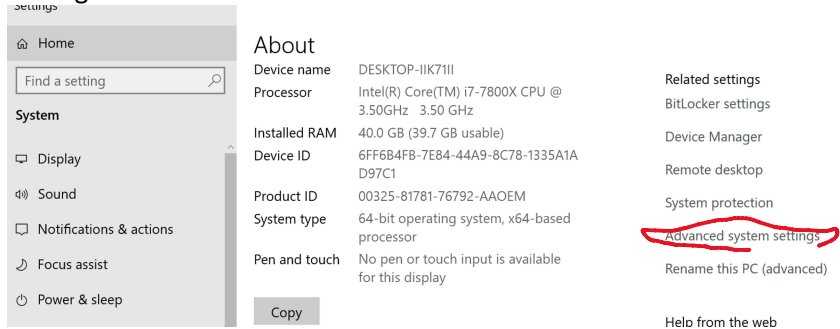


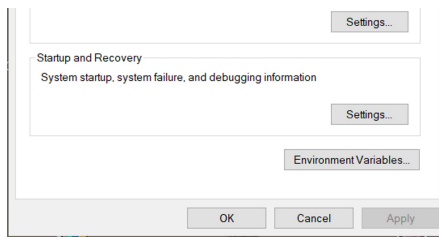
3D Combine Hardware options

Saturday, March 27, 2021 10:45 AM

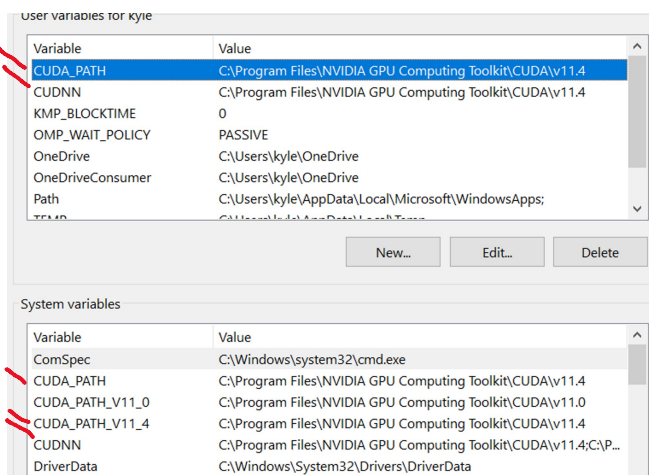
Important: to install Cuda 11.4, 8.2 and 2.7 of Nvidia (any version), instruction will tell you to change environmental variables but not how to actually get there. You can do this from right mouse clicking your computer and selecting advance settings



And environment Variables

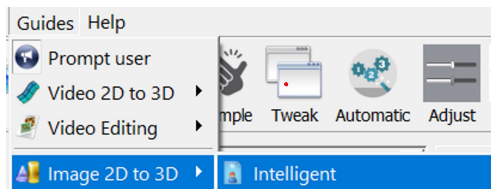


Note: Combine does seem to work even if you have older versions of CUDA installed in the toolkit. You do not need to remove them unless it is not working (screen shot shows 1.0 in addition to the required 1.4_

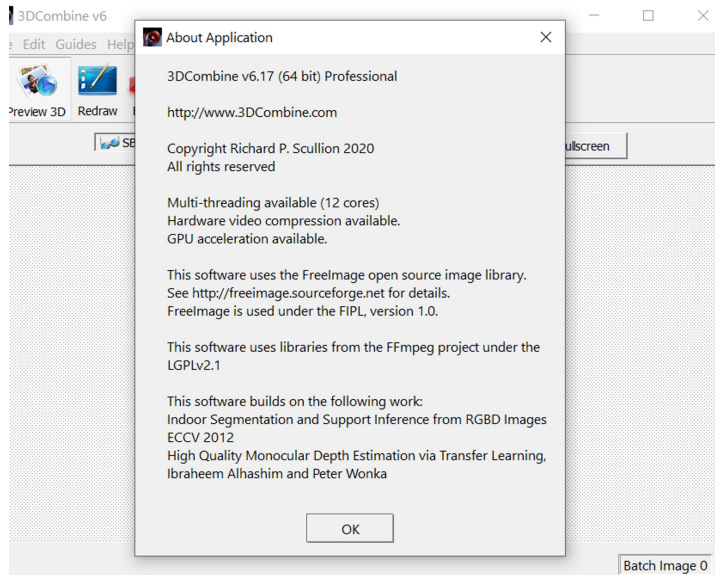


-----after installed to test-----

Under guide, do a 2D to 3D on image and save to any format.



...When done check the about



You should now also see GPU using more then 1% now and on 3D calculations verses encoding in task manager

Name	Status	26%	22%	0%	0%	27%		
		CPU	Memory	Disk	Network	GPU	GPU engine	Power usage
Apps (2)								
> 3DCombine		15.0%	3.813.5 MB	1.1 MB/s	0 Mbps	26.8%	GPU 0 - 3D	Very high